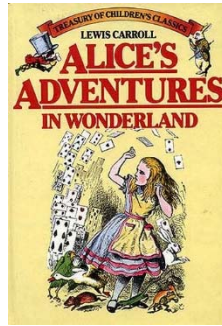


CONRAD WEISER MIDDLE SCHOOL

Friday, January 27, 2017

Day 5



***“If you don't know where you are going, any road will get you there.”
Lewis Carroll***

Word of the Week: Titanic – something of enormous strength, power or size

Today's Lunch Menu:

Entrée (Select one): Stuffed Crust Pizza; Hot Dog; Chicken Salad on Kaiser Roll

Sides: Asparagus Tips; Spinach Salad; Pears; Fresh Fruit

Milk (May select one)

Also available every day: 100% juice; Yogurt; PB&J sandwich; Salad Bar Meal w/Breadstick

~NEWS~



Stage Crew News ~

If you are a student in 7th or 8th grade and would like to be on the stage crew for the Middle School Musical please sign up on the wall near the custodian's room in C-wing and please attend a meeting on Monday, January 30, 2017 in the LGI, at 2:00PM for 7th & 8th grade students only. We need students to help with sound, lights, curtains and moving the scenery on the stage. During this meeting we will discuss all the assignments for the Musical "Aladdin". The show will run on March 10 & 11, 2017.

If you are looking to get involved in an activity here after school for a few weeks in February and early March, please attend this meeting to find out what is involved.

If you are unable to attend this meeting but are interested in helping please contact Mr. Matthew in the custodial workroom. Thank you!

~Clubs & Activities~
~Music~

	Day 1	Day 2	Day 3	Day 4	Day 5	Day 6
Band	7/8 Band	5 Band	6 Band	7/8 Band	5 Band	6 Band
Chorus	5 Chorus	6 Chorus	7/8 Chorus	5 Chorus	6 Chorus	7/8 Chorus

Mr. Lutz's Lessons – Day 5 No Lessons

Ms. Kopicz's Lessons - Day 5

8:00 Percussion G
8:33 Percussion H
9:06 Trombone C
9:39 5th Superstars
10:12 Percussion F

~SPORTS~

~Track and Field~

7th and 8th graders interested in kicking butt on the track team this year should show up to the LGI on Thursday, February 2nd during E/R. We need fast and long distance runners, ridiculously high jumpers and beast-mode throwers! Be there or be square. - Coach Esser, Noll and Yuengel."

Any 7th and 8th grade girl interested in playing JH Softball should attend an informational meeting on Friday, February 3rd from 2:05 – 2:35 in the LGI.

Instructions for Spring Sports:

- If an athlete played a fall or winter sport, they will need to complete a Spring Recertification form. They are available in the middle school office, or on the **Sports page on the CW website**. If any injury has occurred since the initial physical was done, a completed Section 8, signed by a physician, must be submitted.
- If an athlete completed a physical form and turned it in earlier this year for a spring sport, they should already be on a sports roster. They can stop in the middle school office and check with Mrs. Gresoi.
- If an athlete did not play a fall or winter sport, did not complete a physical packet yet, and would like to play a spring sport, they should complete a full physical packet and turn it in to the middle school office. Section 6 needs to be completed and signed by a physician.

All physical packets must be turned in to the middle school office by Monday, February 13.

Sports This Week: January 23 - 27

Date	Time	Sport	Location	Opponent	Dismiss	Depart
1/28	TBA	Girls JH Cheerleading	Away	Panther Cheerleading Invitational		